

| You are in: Lozier Products > Products > Widespan Upright Frame (One-Piece 48"H - 120"H)

Widespan Upright Frame (One-Piece 48"H - 120"H)

Part Number: **Part Number: WSU**

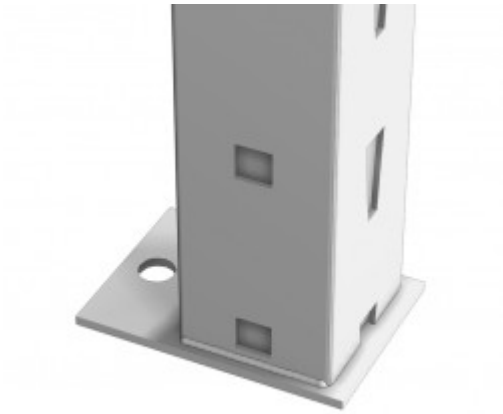


Product Details:

- One-piece Upright Frames for units 48" - 120"
- Upright post slotted on face, allows shelf adjustment 2" on center
- Square holes punched on sides of Upright post for accessories
- Accessory holes punched 6" on center on face of Upright also aid beam placement
- Top Caps included on each Upright
- One Frame required for each section, plus one at end of each run
- To provide increased protection under harsh shipping conditions add "SPC" to part number for additional packaging
- Floor Anchors, Floor Protectors, or Back to Back Connectors may be ordered separately
- Evenly distributed load of 10,000 lbs per Upright Frame at 48" max. Beam spacing, vertically

REINFORCED UPRIGHT FRAME

- "RE" Frame available in 72" - 120"H and all depths (lower Frame only on 132" - 192")
- For use with hand loader/stacker
- Reduces chance of Frame damage
- Channel welded inside each post in lower 48"
- Welded foot plate for anchoring, 1/2" hole



Product Options and Numbers

Example Part #: **WSU 18 048 RE SPC PLT**

Widespan Upright : **WSU**

Depth: **18"**, 24", 30", 36", 42", 48"

Height: **048"**, 060", 072", 084", 096", 120"

Reinforced Upright for Hand Loader/ Stacker

Applications: **RE**, Leave blank if not applicable

Additional Packaging: **SPC**, Leave blank if not applicable

Standard Finish: **PLT**, Optional Catalog Colors

Suffix Key

PLT

-Platinum