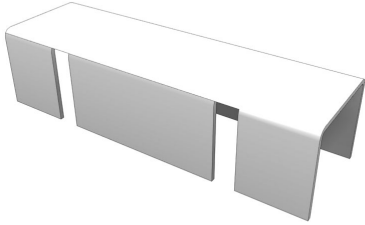


| You are in: [Lozier Products](#) > [Products](#) > [Widespan Back-to-Back Connector](#)

Widespan Back-to-Back Connector

Part Number: **Part Number: WS1231**



Use a Widespan Back-to-Back Connector to space back-to-back Widespan runs. Designed to space uprights 2 1/4" apart.

Product Details:

- Recommended on back-to-back Widespan runs
- Order one for top and one for bottom of unit
- Designed to space Uprites 2 1/4" apart to allow clearance for adjustment of back Beams
- Bottom connector can be omitted if Floor Anchors or Shims are used

Product Options and Numbers

Example Part #: **WS1231 GLV**

Widespan Back-to-Back Connector: WS1231

Standard Finish: GLV

Suffix Key

GLV - Galvanized

