

| You are in: Lozier Products > Products > Quick Connect Lights

# Quick Connect Lights

Part Number:



Quick Connect is a clean, consistent lighting system that is flexible, versatile and discrete. Based on a “plug and play” system, Quick Connect easily retrofits to existing fixtures and can have up to eight 4’ or eleven 3’ lights vertically or seven 4’ or ten 3’ lights horizontally. Plus, it’s simple to rearrange shelves—no electrician required!

## Product Details:

- Max lights per driver: eight 4’ or eleven 3’ lights (vertically); seven 4’ or ten 3’ lights (horizontally)
- “Plug and play” system makes for easy installation
- Easily retrofits to existing fixtures
- Illuminates up to 250-4’ or 330-3’ shelves on a single 15 amp circuit
- LED life rated to 120,000 hours (tested to the LM-80 standard, approved by the Illuminating Society of North America [IESNA])
- LM-79 tested by DOE qualified, verified and recognized testing laboratory
- Plastic parts made from self-extinguishing UL94 V-0 material
- Energy Star certified and DLC (DesignLights Consortium) approved
- All component parts are UL, ULc, and CE certified
- All LED Light Fixtures and Quick Connect Accessories (excluding Power Supply/Drivers) have a 10 year product warranty
- Quick Connect Power Supply/Drivers/Hardware have an 8 year warranty
- Defective parts must be returned to Lozier before replacement parts can be provided

## How to Order

---

## Quick Connect High Output LED Light

---

- Secures to underside of Shelf via high-strength, rare earth magnets
- 450 lumens/foot minimum
- 4000K-Neutral Color Temperature
- Typical Color Rendering Index (CRI): 85 minimum
- 110 degree LED beam spread
- Standard power: 3 watts/foot
- Efficiency: 150 lumens/watt



### Product Options and Numbers

Example Part #: **LKQC3LED4000** N/A

36" L: **LKQC3LED4000**

48" L: **LKQC4LED4000**

Standard Finish: **N/A**

#### Suffix Key

N/A

- No Finish

## Quick Connect Standard Output LED Light

---

- Secures to underside of Shelf via high-strength, rare earth magnets
- 260 lumens/foot minimum
- 4000K-Neutral Color Temperature
- Typical Color Rendering Index (CRI): 85 minimum
- 110 degree LED beam spread
- Standard power: 1.85 watts/foot
- Efficiency: 140 lumens/watt



### Product Options and Numbers

Example Part #: [QCSO3LED4000](#) [N/A](#)

36" L: [QCSO3LED4000](#)

48" L: [QCSO4LED4000](#)

Standard Finish: [N/A](#)

#### Suffix Key

[N/A](#) - No Finish

## 60 Watt Quick Connect Driver-Vertical And Horizontal Applications

---

- No outlet on Driver, relies on wall outlet for power
- Recommended Driver for Quick Connect Standard Output LED Light
- 9" Lead and 84" Cord Length
- Self-regulating feature prevents overloading
- 24VDC operation
- Connects to Power Track
- Use for both vertical and horizontal applications



## Product Options and Numbers

Part #: [QCPSNO84LED](#) [N/A](#)

Quick Connect Driver: [QCPSNO84LED](#)

Standard Finish: [N/A](#)

#### Suffix Key

[N/A](#) - No Finish

## 100 Watt Quick Connect Driver-Vertical and Horizontal Applications

---

- Outlet on Driver allows connection with other Drivers, minimizing number of outlets needed
- 9" Lead and 84" Cord Length
- Self-regulating feature prevents overloading
- 24VDC operation
- Connects to Power Track
- Use for both vertical and horizontal applications



## Product Options and Numbers

Part #: [LKQCPS84LED](#) N/A

Quick Connect Driver: [LKQCPS84LED](#)

Standard Finish: [N/A](#)

### Suffix Key

N/A - No Finish

## 100 Watt Quick Connect Driver-Horizontal Only Applications

- Outlet on Driver allows connection with other Drivers, minimizing number of outlets needed
- Connects directly to first light in horizontal run of shelves
- 120" Lead and 84" Cord Length
- Self-regulating feature prevents overloading
- 24VDC operation
- Use for horizontal applications only, do not use with multiple lights per section



## Product Options and Numbers

Part #: [LKQCPD84LED](#) N/A

Quick Connect Driver: [LKQCPD84LED](#)

Standard Finish: **N/A**

#### Suffix Key

**N/A** - No Finish

## Quick Connect Power Track

---

- Power Track can be cut in field for various lengths
- Power Track slides onto Upright side rail

### Product Options and Numbers

Example Part #: **LKQCT96 XG9**

96" L Power Track: **LKQCT96**

Standard Finish: **XG9**, XG4, XM4



#### Suffix Key

<b>XG9</b>	- White
<b>XG4</b>	- Black
<b>XM4</b>	- Beige

## Quick Connect Harness Connector

---

- Connects Lights to Power Track
- Magnetic cord management ring securely attaches Harness Connector to underside of Shelf
- Universal polarity connection allows for the Harness Connector to hook to the power strip in any orientation

### Product Options and Numbers

Example Part #: **LKQCH22 XG9**



22" Harness Connector: [LKQCH22](#)

31" Harness Connector: [LKQCH31](#)

Standard Finish: [XG9](#), XG4

Suffix Key	
XG9	- White
XG4	- Black

## Quick Connect Cord Management Clip

---

- Translucent, white nylon
- Adhesive back
- 1/8" capacity



### Product Options and Numbers

Part #: [LKCORDCLIPA](#) [N/A](#)

Cord Management Clip: [LKCORDCLIPA](#)

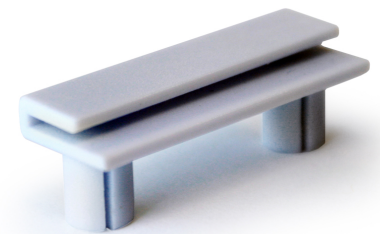
Standard Finish: [N/A](#)

Suffix Key	
N/A	- No Finish

## Quick Connect Pegboard Back Adapter

---

- Installs in any pegboard back with 1" on center holes (1/4" diameter)
- Design replicates profile of Lozier Upright Side Rail
- Use when Power Track needs to be installed on a non-Lozier fixture



### Product Options and Numbers

Example Part #: [LKQCPBA](#) [XG9](#)

96"L Power Track: [LKQCPBA](#)

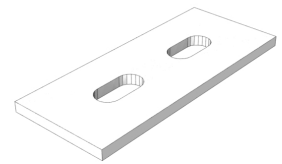
Standard Finish: [XG9](#), XG4

Suffix Key	
XG9	- White
XG4	- Black

## Quick Connect LED Wood Shelf Clip

---

- Screws to bottom of Wood Shelf
- 2 clips per Light
- Align with magnets on underside of Lights



### Product Options and Numbers

Part #: [LKQCWCLED](#) N/A

Wood Shelf Clip: [LKQCWCLED](#)

Standard Finish: [N/A](#)

Suffix Key	
N/A	- No Finish