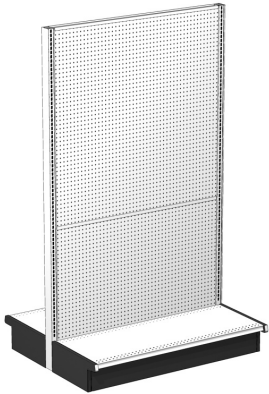


| You are in: Lozier Products > Products > Island Section (1/4" Backs)

Island Section (1/4" Backs)

Part Number:



Product Details:

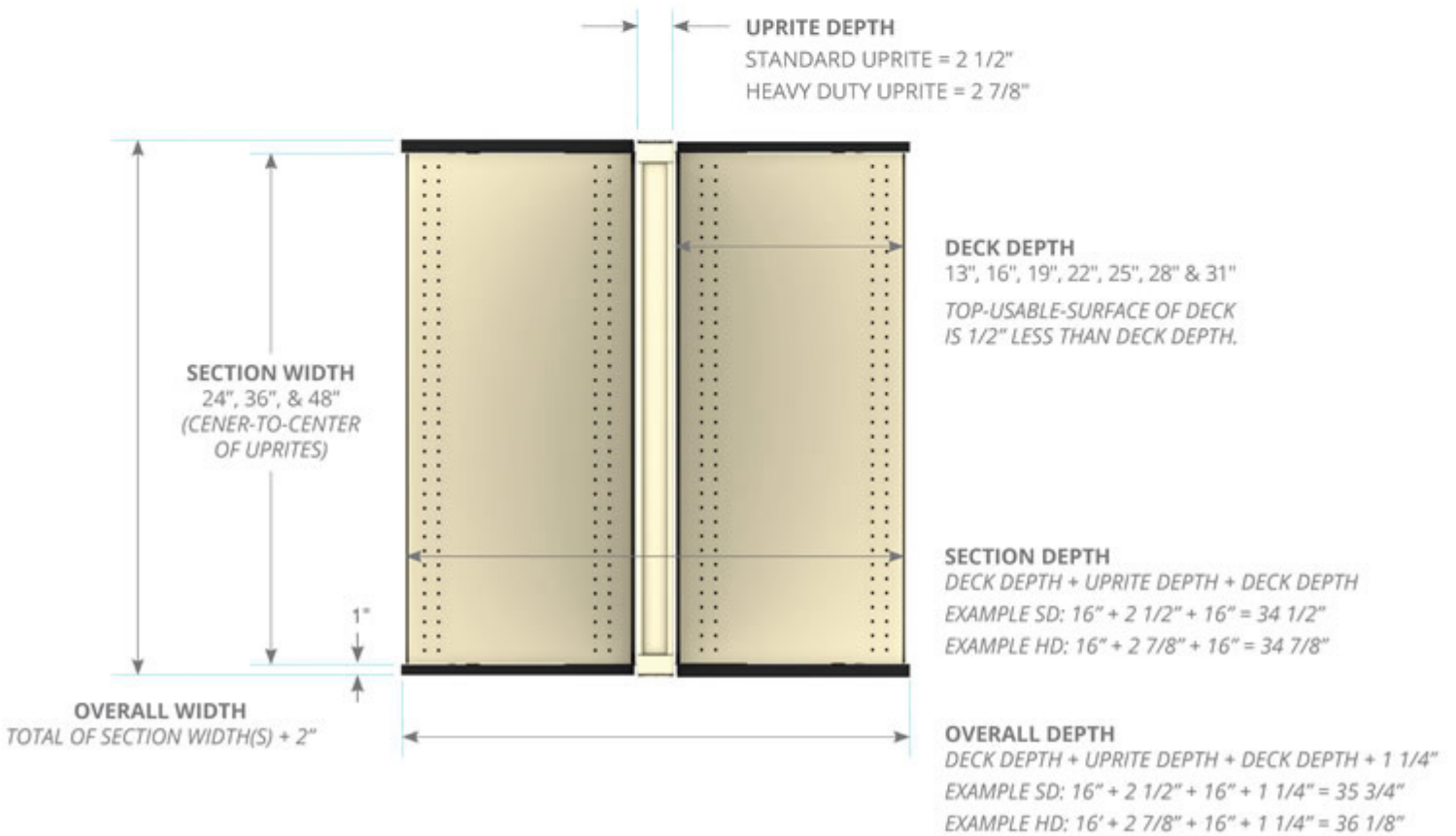
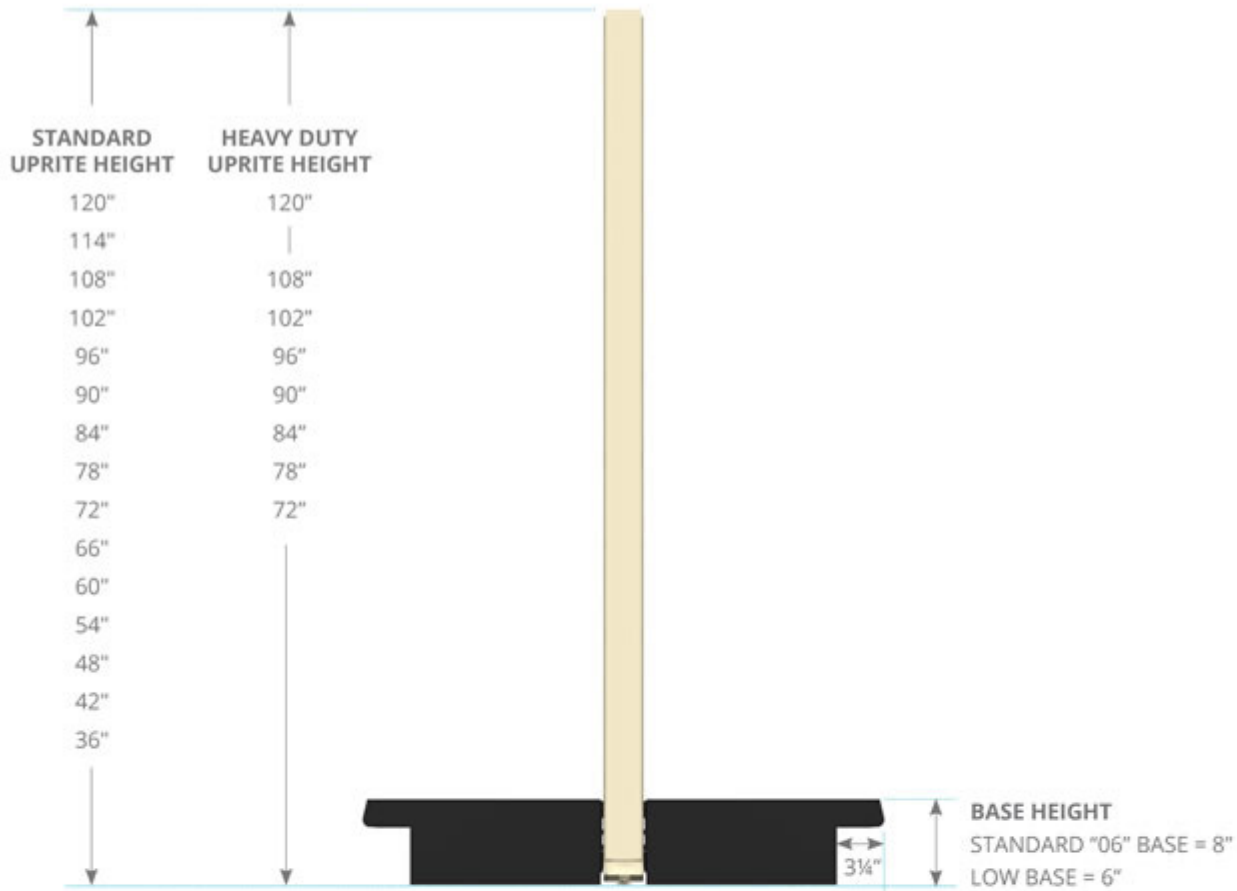
Standard Duty- Load Rating

- Low Base -15,000 inch lbs unbalanced
- 06 Base- 12,000 inch lbs unbalanced

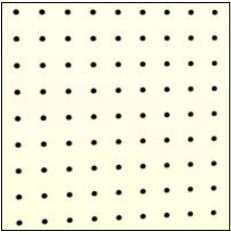
Heavy Duty- Load Rating

- Low Base -18,000 inch lbs unbalanced
- 06 Base- 20,000 inch lbs unbalanced

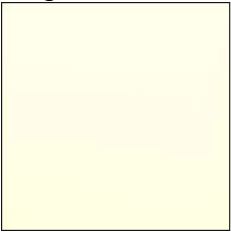
DIMENSIONS



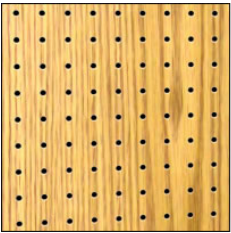
BACK OPTIONS



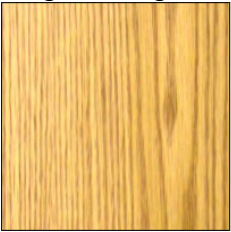
Pegboard



Marteck



Peg Woodgrain



Woodgrain

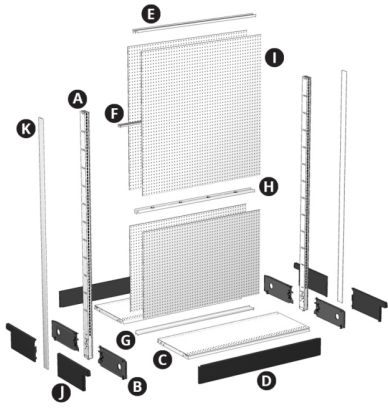


Econo Marteck

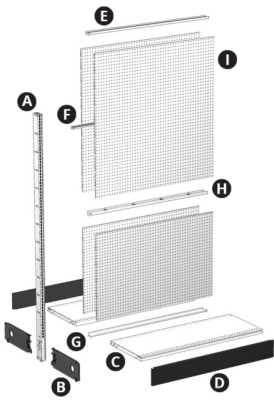
How to Order

COMPONENTS (ORDERED SEPARATELY)	STARTER QTY.	ADD- ON QTY.
A. Uprite Base Bracket	2	1
B. (Standard or Heavy Duty)	4	2
C. Deck (Standard or Heavy Duty)	2	2
D. Base Front (Open or Closed)	2	2
E. Top Rail	1	1
F. Center Rail (2 per section 96H-120H)	1 or 2	1 or 2
G. Bottom Rail	1	1
H. Splicer Rail (Sections 78H-120H) Use 2 top rails for splicer on 2' and 30" wide sections.	1	1
I. Back Material (1 or 2 per side)	See Back Chart	See Back Chart
J. Base End Trim (Pair)	2	0
K. Uprite End Trim	2	0

ISLAND SECTION STARTER



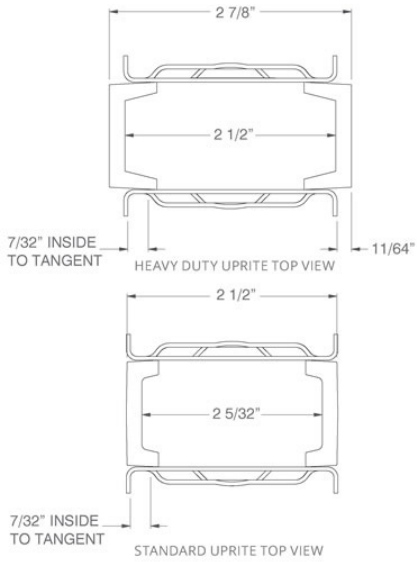
ISLAND SECTION ADD-ON



Uprite

- 3/16" thick face channel
- 1" slotted on center for maximum flexibility
- Use for Wall and Island Sections
- Steel welded construction
- Includes side flanges to retain Back material, leveling leg for uneven floors
- Includes Top Caps on Uprites 36"-66"H





Product Options and Numbers

Example Part #: **U 42 PLT**

Uprite: U, UH

U Height: 30", 36", **42"**, 48", 54", 60", 66", 72", 78", 84", 90", 96", 102", 108", 114", 120"

UH Height: 72", 78", 84", 90", 96", 108", 120"

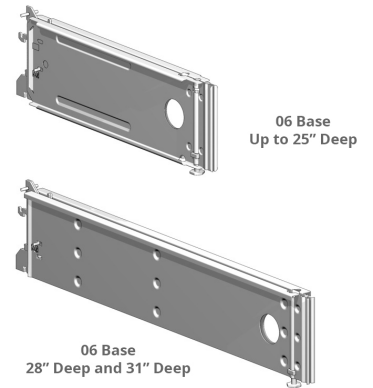
Standard Finish: **PLT**, Optional Catalog Colors

Suffix Key

PLT	- Platinum
U	- Uprite
UH	- Heavy Duty Uprite

Spring Locking Base Bracket

- Features 2" conduit hole for greater electrical access
- Includes leveling legs for uneven flooring
- Install straight in using integral spring latch
- 28" deep and 31" deep base brackets are only Heavy Duty. There are no Standard Duty 28" deep or 31" deep base brackets.



NOTE

Actual Bracket length is 3" less than nominal Deck depth. Order CHR Base Brackets when using Open Base Fronts. (This is done automatically when section/end part numbers are ordered with OBF's.)

Product Options and Numbers

Example Part #: **BB 19 06 S PTD**

Base Bracket: **BB (Standard Duty)**, BBH (Heavy Duty)

Deck Depth BB: 13", 16", **19"**, 22", 25", 28", 31"

Deck Depth BBH: 16", 19", 22", 25"

Base Height: **06**, LB

Spring Locking Base Bracket: **S**

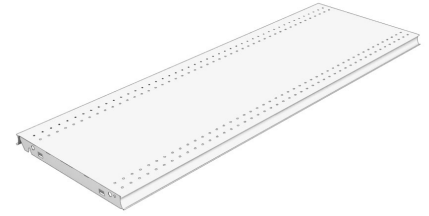
Standard Finish: **PTD**, Optional CHR

* BB28 and BB31 are rated for Heavy Duty

Suffix Key	
06	- 06 Base (8"H)
LB	- Low Base (6"H)
PTD	- Painted Random
CHR	- Charcoal Black

SD Deck

- Standard Deck style for Island and Wall runs
- Molding accommodates a 1.235" tag
- 1/4" perforations for clip-on accessories
- Evenly distributed load of 600 lbs (13"-19"D) and 800 lbs (22"-31"D)



Product Options and Numbers

Example Part #: **SD 4 16 N PLT**

SD Deck: **SD**

Width: 2', 30", 3', **4'**

Base Depth: 13", **16"**, 19", 22", 25", 28", 31"

No Molding: **N**

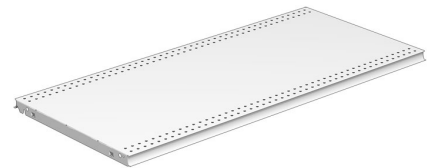
Standard Finish: **PLT**, Optional Catalog Colors

Suffix Key

N	- No Molding
PLT	- Platinum

SDRE Deck

- Reinforced tag area reduces deflection at front of deck
- All other features are identical to a SD Style Deck
- Evenly distributed load of 600 lbs (13"-19"D) and 800 lbs (22"-31"D)



Product Options and Numbers

Example Part #: **SDRE 4 16 N PLT**

SD Deck: **SDRE**

Width: 3', **4'**

Base Depth: 13", **16"**, 19", 22", 25", 28", 31"

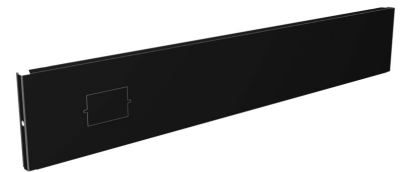
No Molding: **N**

Standard Finish: **PLT**, Optional Catalog Colors

Suffix Key	
N	- No Molding
PLT	- Platinum

Closed Base Front

- 3' and 4' Fronts have an electrical knockout
- Snaps in place beneath Deck to cover gap between Deck and floor
- Fits flush with floor regardless of leveling adjustments



Product Options and Numbers

Example Part #: **CBF 4 06 CHR**

Close Base Front: **CBF**

Section Width: 2', 30", 3', 4'

Base Height: **06**, LB

Standard Finish: **CHR**

Suffix Key	
06	- 06 Base (8"H)
LB	- Low Base (6"H)
CHR	- Charcoal Black

Open Base Front

- Use Open Base Front instead of Closed Base Front
- Order CHR Base Brackets when using Open Base Front

Product Options and Numbers

Example Part #: **OBF 4 06 CHR**



Open Base Front: **OBF**

Section Width: 2', 30", 3', 4'

Base Height: **06**, LB

Standard Finish: **CHR**

Suffix Key	
06	- 06 Base (8"H)
LB	- Low Base (6"H)
CHR	- Charcoal Black

Top Rail

- All Island and Wall Sections require one Top, Center and Bottom Rail
- 2' and 30" sections use two Top Rails to make a Splicer Rail
- Electrical knockouts included on all Rails



Product Options and Numbers

Example Part #: **R 4 T PLT**

Rails: **R**

Width: 2', 30", 3', 4'

Top Rail: **T**

Standard Finish: **PLT**, Optional Catalog Colors

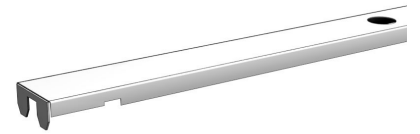
Suffix Key	
------------	--

PLT

- Platinum Color

Center Rail

- All Island and Wall Sections require one Top, Center and Bottom Rail
- 96"H-144"H Backs require two Center Rails
- Center Rail finish is always N/A because it's hidden
- Electrical knockouts included on all Rails



Product Options and Numbers

Example Part #: **R 4 C N/A**

Rails:**R**

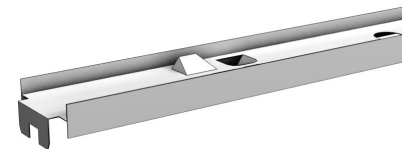
Width: 2', 30", 3', **4'**

Center Rail: **C**

Standard Finish: **N/A**

Splicer Rail

- All Island and Wall Sections require one Top, Center and Bottom Rail
- 78"H - 144"H Backs require one Splicer Rail
- Splicer rail is not available in 2' or 30"
- Use two top rails for splicer rail on 2' and 30" wide sections.
- Electrical knockouts included on all Rails



Product Options and Numbers

Example Part #: **R 4 S PLT**

Rails:**R**

Width: 3', 4'

Splicer Rail: S

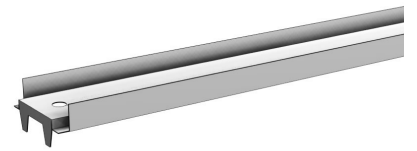
Standard Finish: PLT,Optional Catalog Colors

Suffix Key

PLT - Platinum Color

Bottom Rail

- All Island and Wall Sections require one Top, Center and Bottom Rail
- Electrical knockouts included on all Rails
- Also used for 2' and 30" Slotwall Backs



Product Options and Numbers

Example Part #: R 4 B PLT

Rails:R

Width: 2', 30", 3', 4'

Bottom Rail: B

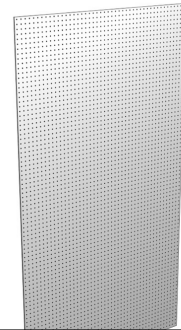
Standard Finish: PLT,Optional Catalog Colors

Suffix Key

PLT - Platinum Color

Hardboard Backs

- Use one-piece Backs for heights 36"-72"
- For heights above 72" order 2 backs, see table below
- Pegboard 9/32" diameter holes, 1" on center
- To order the correct size Back, take Upright height minus 6



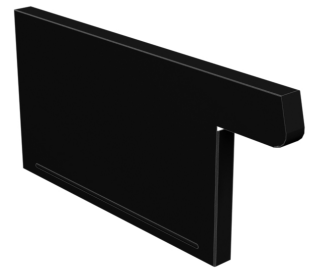
Product Options and Numbers

Section Heights: 78"-120" Use 2-Piece Backs		
Upright Height	Order Backs	
78"	BE_36 + BE_36	
84"	BE_30 + BE_48	
90"	BE_36 + BE_48	
96"	BE_42 + BE_48	
102"	BE_66 + BE_30	
108"	BE_66 + BE_36	
114"	BE_66 + BE_42	
120"	BE_66 + BE_48	
Actual Back Height Information		
Upright Height	Nominal Back Height	Actual Height
30"	24"	23 13/16"
36"	30"	29 13/16"
42"	36"	35 13/16"
48"	42"	41 13/16"
54"	48"	47 13/16"
60"	54"	53 13/16"
66"	60"	59 13/16"
72"	66"	65 13/16"
Actual Width Information		
Nominal Width	Actual Width	
6"	4 17/32"	
12"	10 17/32"	
16"	14 17/32"	
18"	16 17/32"	

24"	22 17/32"
30"	28 17/32"
32"	30 17/32"
36"	34 17/32"
42"	40 17/32"
48"	46 17/32"
Actual Back Height for Extension Uprite	
Uprite Height	Actual Height
6"	5 13/16"
12"	11 13/16"
18"	17 13/16"
24"	23 13/16"
30"	29 13/16"
36"	35 13/16"
42"	41 13/16"
48"	47 13/16"

Base End Trim

- Attaches to the first and last Base Bracket in a run
- Comes in a pair
- One pair is required to finish a Wall run
- Two pairs are required to finish an Island run



Product Options and Numbers

Example Part #: **BET 13 06 CHR**

Base End Trim: **BET**

Deck Depth: **13"**, 16", 19", 22", 25", 28", 31"

Base Height: **06**, LB

Standard Finish: **CHR**

Suffix Key

06	- 06 Base (8"H)
LB	- Low Base (6"H)
CHR	- Charcoal Black