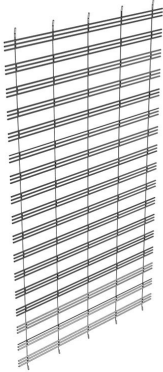


| You are in: [Lozier Products](#) > [Products](#) > [Wire Back Retainer Extensions](#)

Wire Back Retainer Extensions

Part Number: **Part Number: RBE**



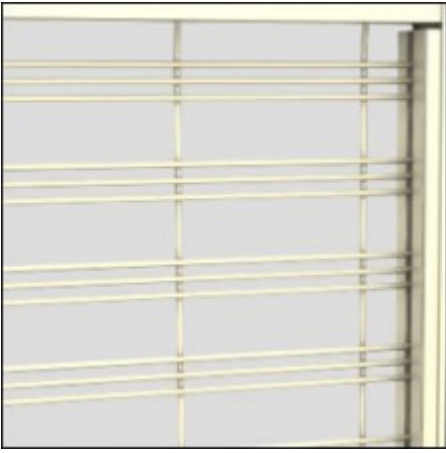
Choose the Wire Grid Backs that fit your store environment and merchandising needs. We have three styles available: Slot Grid, Multi-Grid, and Louver Grid.

Product Details:

- Choose the Back style that meets your visual merchandising needs
- Order RBE_ 6" shorter than Uprite (Example: U72, order RBE466MG. One-piece backs up to 90"H)



SG = Slot Grid



MG = Multi-Grid



LG = Louver Grid

How to Order

Example Part #: **RBE 4 54 MG PLT**

Wire Back Retainer Extension: **RBE**

Width: 2', 30", 3', **4'**

Height: 06", 12", 18", 24", 30", 36", 42", 48", **54"**, 60", 66", 72", 78", 84", 90"

Back Style: **MG**, SG, LG, P, M, ME, P2, M2

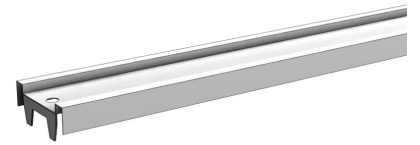
Standard Finish: **PLT**, Optional Catalog Colors

Suffix Key

- SG** - Slot Grid Back
- LG** - Louver Grid Back
- MG** - Multi-Grid Back
- P** - Pegboard Back
- M** - Marteck Back
- ME** - Econo Marteck Back
- P2** - Single Pegboard Back, painted two sides
- M2** - Single Marteck Back, painted both sides
- PLT** - Platinum

Top Rail

- All Island and Wall Sections require one Top, Center and Bottom Rail
- 2' and 30" sections use two Top Rails to make a Splicer Rail
- Electrical knockouts included on all Rails



Product Options and Numbers

Example Part #: **R 4 T PLT**

Rails: R

Width: 2', 30", 3', 4'

Top Rail: T

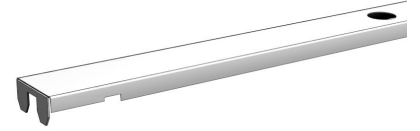
Standard Finish: PLT, Optional Catalog Colors

Suffix Key

PLT - Platinum Color

Center Rail

- All Island and Wall Sections require one Top, Center and Bottom Rail
- 96”H-144”H Backs require two Center Rails
- Center Rail finish is always N/A because it's hidden
- Electrical knockouts included on all Rails



Product Options and Numbers

Example Part #: **R 4 C N/A**

Rails: R

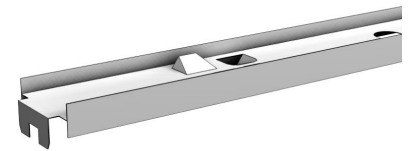
Width: 2', 30", 3', 4'

Center Rail: C

Standard Finish: N/A

Splicer Rail

- All Island and Wall Sections require one Top, Center and Bottom Rail
- 78”H - 144”H Backs require one Splicer Rail
- Splicer rail is not available in 2' or 30"
- Use two top rails for splicer rail on 2' and 30" wide sections.
- Electrical knockouts included on all Rails



Product Options and Numbers

Example Part #: **R 4 S PLT**

Rails: R

Width: 3', 4'

Splicer Rail: S

Standard Finish: PLT, Optional Catalog Colors

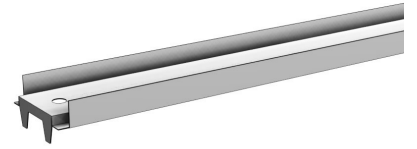
Suffix Key

PLT

- Platinum Color

Bottom Rail

- All Island and Wall Sections require one Top, Center and Bottom Rail
- Electrical knockouts included on all Rails
- Also used for 2' and 30" Slotwall Backs



Product Options and Numbers

Example Part #: **R 4 B PLT**

Rails:R

Width: 2', 30", 3', 4'

Bottom Rail: B

Standard Finish: PLT,Optional Catalog Colors

Suffix Key

PLT

- Platinum Color