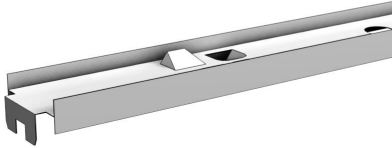


| You are in: [Lozier Products](#) > [Products](#) > [Splicer Rail](#)

Splicer Rail

Part Number: **Part Number: R**



Product Details:

- All Island and Wall Sections require one Top, Center and Bottom Rail
- 78"H - 144"H Backs require one Splicer Rail
- Splicer rail is not available in 2' or 30"
- Use two top rails for splicer rail on 2' and 30" wide sections.
- Electrical knockouts included on all Rails

Product Options and Numbers

Example Part #: **R 4 S PLT**

Rails:**R**

Width: 3', 4'

Splicer Rail: **S**

Standard Finish: **PLT**, Optional Catalog Colors

Suffix Key

PLT

- Platinum Color