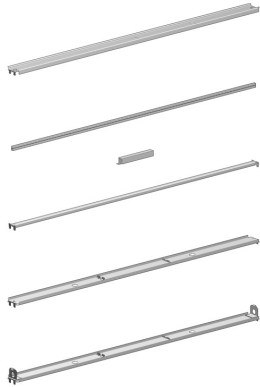


| You are in: Lozier Products > Products > Slotwall with Hardboard Back Rails

Slotwall with Hardboard Back Rails

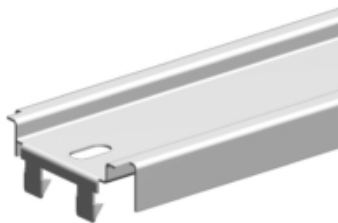
Part Number:



Product Details:

- Slotwall with Hardboard Island and Wall Sections require at least one Top, Slotwall Center, Hardboard Back Support Clip, and Heavy Duty Bottom Rail
- 36" - 66"H Upright requires: one Center Rail and one Support Clip
- 72" - 144"H Upright requires: two Center Rails, two Support Clips and one Half Splicer
- On Extension Uprights, use one Slotwall Center Rail on 12" - 60"H Uprights and two on 66" - 72"H Uprights
- Electrical knockouts included on Top Rails
- For 2' and 30" sections, use Standard Duty Bottom Rail (Heavy Duty Bottom Rail unavailable)

How to Order



T = TOP RAIL



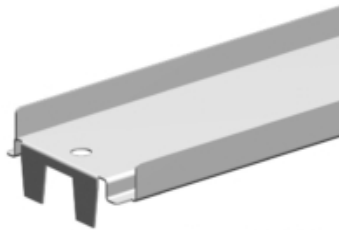
HS = HALF SPLICER RAIL



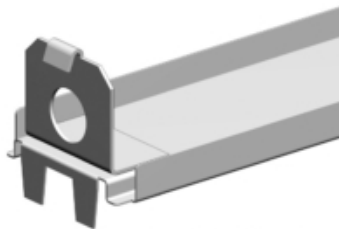
SC = SLOTWALL CENTER RAIL



HBSC = HARDBOARD BACK SUPPORT CLIP



B = BOTTOM RAIL



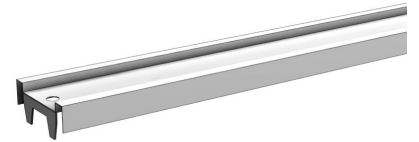
HDB = HEAVY DUTY BOTTOM RAIL

Suffix Key

PLT	- Platinum Color
T	- Top Rail
HS	- Half Splicer Rail
SC	- Slotwall Center Rail
B	- Bottom Rail
HDB	- Heavy Duty Bottom Rail
HBSC	- Hardboard Back Support Clip

Top Rail

- All Island and Wall Sections require one Top, Center and Bottom Rail
- 2' and 30" sections use two Top Rails to make a Splicer Rail
- Electrical knockouts included on all Rails



Product Options and Numbers

Example Part #: **R 4 T PLT**

Rails:R

Width: 2', 30", 3', 4'

Top Rail: T

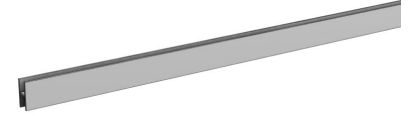
Standard Finish: PLT,Optional Catalog Colors

Suffix Key

PLT	- Platinum Color
------------	------------------

Half Splicer Rail

- 72" - 144"H Uprite requires: two Center Rails, two Support Clips and one Half Splicer
- Half Splicer Rails are used on wall or island sections taller than 66" when slotwall is on one side and hardboard is on the other. Half splicers join hardboard backs that are spliced at different height than the slotwall. Hardboard back clips are also used in this application.



Product Options and Numbers

Example Part #: **R 4 HS PLT**

Rails:R

Width: 2', 30", 3', **4'**

Half Splicer Rail: **HS**

Standard Finish: **PLT**, Optional Catalog Colors

Suffix Key

PLT - Platinum Color

Slotwall Center Rail

- Slotwall Island and Wall Sections require at least one Top, Slotwall Center, and Heavy Duty Bottom Rail
- Order one Slotwall Center Rail for 36" - 66"H Uprites
- Order two Slotwall Center Rails for 72" - 144"H Uprites
- Use one Slotwall Center Rail on 12" - 48"H Extension Uprites



Product Options and Numbers

Example Part #: **R 4 SC PLT**

Rails:R

Width: 2', 30", 3', **4'**

Slotwall Center Rail: **SC**

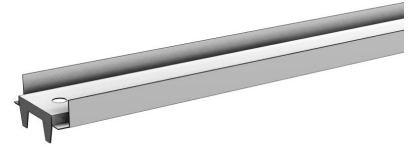
Standard Finish: **PLT**

Suffix Key

PLT - Platinum Color

Bottom Rail

- All Island and Wall Sections require one Top, Center and Bottom Rail
- Electrical knockouts included on all Rails
- Also used for 2' and 30" Slotwall Backs



Product Options and Numbers

Example Part #: **R 4 B PLT**

Rails:**R**

Width: 2', 30", 3', 4'

Bottom Rail: **B**

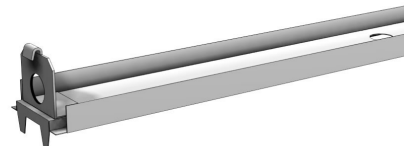
Standard Finish: **PLT**, Optional Catalog Colors

Suffix Key

PLT - Platinum Color

Heavy Duty Bottom Rail

- Slotwall Island and Wall Sections require at least one Top, Slotwall Center, and Heavy Duty Bottom Rail
- For use with 3' and 4' Slotwall Backs only
- For 2' and 30" Slotwall Backs use Bottom Rail



Product Options and Numbers

Example Part #: **R 4 HDB PLT**

Rails:R

Width: 3', 4'

Heavy Duty Bottom Rail: **HDB**

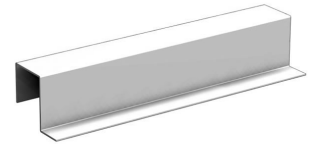
Standard Finish: **PLT**, Optional Catalog Colors

Suffix Key

PLT - Platinum Color

Hardboard Back Support Clip

- 36" - 66"H Upright requires: one Center Rail and one Support Clip
- 72" - 144"H Upright requires: two Center Rails, two Support Clips and one Half Splicer



Product Options and Numbers

Example Part #: **HBSC GLV**

Hardboard Back Support Clip: **HBSC**

Standard Finish: **GLV**

Suffix Key

GLV - Galvanized