

| You are in: [Lozier Products](#) > [Products](#) > [Back Rails \(Slotwall\)](#)

# Back Rails (Slotwall)

Part Number: R



## Product Details:

- Slotwall Island and Wall Sections require at least one Top, Slotwall Center, and Heavy Duty Bottom Rail
- Order one Slotwall Center Rail for 36" - 66"H Uprites
- Order two Slotwall Center Rails for 72" - 144"H Uprites
- Use one Slotwall Center Rail on 12" - 48"H Extension Uprites

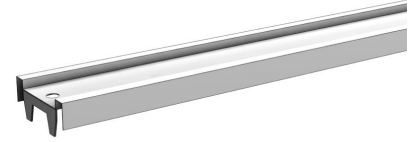
## How to Order

---

### Top Rail

---

- All Island and Wall Sections require one Top, Center and Bottom Rail
- 2' and 30" sections use two Top Rails to make a Splicer Rail
- Electrical knockouts included on all Rails



## Product Options and Numbers

Example Part #: **R 4 T PLT**

**Rails:** R

**Width:** 2', 30", 3', 4'

**Top Rail:** T

**Standard Finish:** PLT, Optional Catalog Colors

### Suffix Key

PLT - Platinum Color

## Slotwall Center Rail

- Slotwall Island and Wall Sections require at least one Top, Slotwall Center, and Heavy Duty Bottom Rail
- Order one Slotwall Center Rail for 36" - 66"H Uprites
- Order two Slotwall Center Rails for 72" - 144"H Uprites
- Use one Slotwall Center Rail on 12" - 48"H Extension Uprites



## Product Options and Numbers

Example Part #: **R 4 SC PLT**

**Rails:** R

**Width:** 2', 30", 3', 4'

**Slotwall Center Rail:** SC

**Standard Finish:** PLT

### Suffix Key

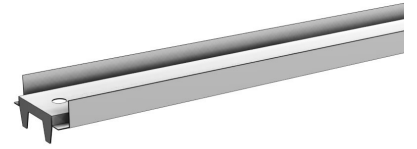
PLT

- Platinum Color

## Bottom Rail

---

- All Island and Wall Sections require one Top, Center and Bottom Rail
- Electrical knockouts included on all Rails
- Also used for 2' and 30" Slotwall Backs



### Product Options and Numbers

Example Part #: **R 4 B PLT**

Rails:**R**

Width: 2', 30", 3', 4'

Bottom Rail: **B**

Standard Finish: **PLT**, Optional Catalog Colors

#### Suffix Key

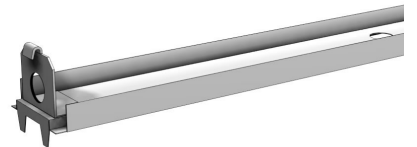
PLT

- Platinum Color

## Heavy Duty Bottom Rail

---

- Slotwall Island and Wall Sections require at least one Top, Slotwall Center, and Heavy Duty Bottom Rail
- For use with 3' and 4' Slotwall Backs only
- For 2' and 30" Slotwall Backs use Bottom Rail



### Product Options and Numbers

Example Part #: **R 4 HDB PLT**

Rails:**R**

**Width: 3', 4'**

**Heavy Duty Bottom Rail: HDB**

**Standard Finish: PLT, Optional Catalog Colors**

Suffix Key

PLT - Platinum Color