

| You are in: [Lozier Products](#) > [Products](#) > [Back Rails \(Marteck, Pegboard, Woodgrain\)](#)

# Back Rails (Marteck, Pegboard, Woodgrain)

Part Number: R



## Product Details:

- All Island and Wall Sections require one Top, Center and Bottom Rail
- 78"H - 144"H Backs require one Splicer Rail
- 96"H-144"H Backs require two Center Rails
- Splicer rail is not available in 2' or 30"
- 2' and 30" sections use two Top Rails to make a Splicer Rail
- Center Rail finish is always N/A because it's hidden
- Electrical knockouts included on all Rails

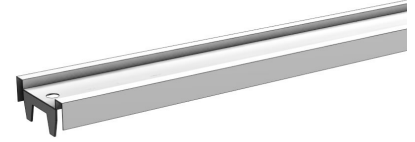
## How to Order

---

## Top Rail

---

- All Island and Wall Sections require one Top, Center and Bottom Rail
- 2' and 30" sections use two Top Rails to make a Splicer Rail
- Electrical knockouts included on all Rails



## Product Options and Numbers

Example Part #: **R 4 T PLT**

**Rails:**R

**Width:** 2', 30", 3', 4'

**Top Rail:** T

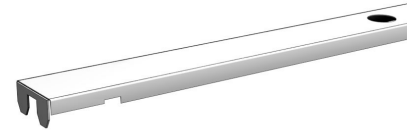
**Standard Finish:** **PLT**,Optional Catalog Colors

Suffix Key	
PLT	- Platinum Color

## Center Rail

---

- All Island and Wall Sections require one Top, Center and Bottom Rail
- 96"H-144"H Backs require two Center Rails
- Center Rail finish is always N/A because it's hidden
- Electrical knockouts included on all Rails



## Product Options and Numbers

Example Part #: **R 4 C N/A**

**Rails:**R

**Width:** 2', 30", 3', 4'

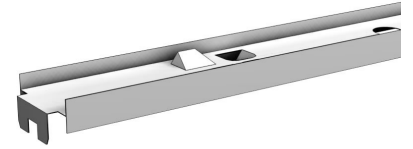
**Center Rail:** C

**Standard Finish:** **N/A**

## Splicer Rail

---

- All Island and Wall Sections require one Top, Center and Bottom Rail
- 78"H - 144"H Backs require one Splicer Rail
- Splicer rail is not available in 2' or 30"
- Use two top rails for splicer rail on 2' and 30" wide sections.
- Electrical knockouts included on all Rails



## Product Options and Numbers

Example Part #: **R 4 S PLT**

**Rails:**R

**Width:** 3', 4'

**Splicer Rail:** **S**

**Standard Finish:** **PLT**, Optional Catalog Colors

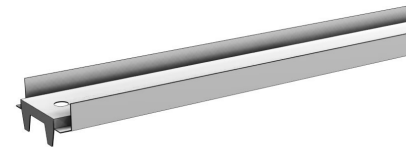
### Suffix Key

**PLT** - Platinum Color

## Bottom Rail

---

- All Island and Wall Sections require one Top, Center and Bottom Rail
- Electrical knockouts included on all Rails
- Also used for 2' and 30" Slotwall Backs



## Product Options and Numbers

Example Part #: **R 4 B PLT**

**Rails:**R

**Width:** 2', 30", 3', 4'

**Bottom Rail: B**

**Standard Finish: PLT**, Optional Catalog Colors

Suffix Key

**PLT** - Platinum Color