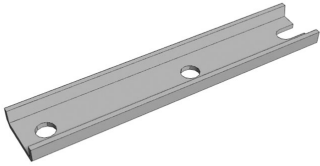


| You are in: [Lozier Products](#) > [Products](#) > [Multi-Purpose Anchor Plate](#)

# Multi-Purpose Anchor Plate

Part Number: **Part Number: DC1248**



Use Multi-Purpose Anchor Plates at the end of a run, Wall End Display, Base Bracket, Upright or other limited access applications. Anchor Plates are required when your fixture exceeds height-to-depth ratio limits and with fixtures over 5' tall in certain seismic zones.

## Product Details:

- Use Anchor Plates when shelving unit exceeds height-to-depth ratio limits
- Accepts 1/4" or 3/8" diameter anchor bolts (not included)
- Holes are 7/16" diameter
- Required for shelving over 5' H in certain seismic zones
- Secures leveling leg to floor
- Use Multi-Purpose Anchor for end of run, Wall End Display, Base Bracket, Upright or limited access applications

## Product Options and Numbers

---

Part #: **DC1248** **GLV**

**Upright Anchor Plate: DC1248**

**Standard Finish: GLV**

Suffix Key

**GLV**

- Galvanized