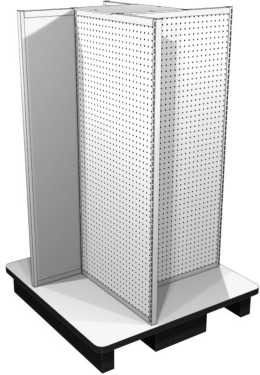


| You are in: [Lozier Products](#) > [Products](#) > [Four Way Displayer](#)

# Four Way Displayer

Part Number: **Part Number: FWD**



Four Way Displayer with pallet-jack-accessible wood base

## Product Details:

- Wood Base with Pallet Jack Access
- Wood Base edged with black T-Molding
- Slotted Steel Frames accept all Lozier Shelves and Accessories
- Evenly distributed load of 300 lbs per Panel, 1,000 lbs total unit load capacity
- Order Shelves separately, see size chart below

Offset Panel (Y/N)	Panel Width	Base Dimensions	Max. Shelf Depth
Y	24"	38" x 38"	10"
Y	30"	47" x 47"	13"
Y	36"	56" x 56"	16"

## Product Options and Numbers

---

- Order four respective width Panels for base size shown on chart (available heights 54" or 60")
- Order one Base per unit (includes top cover)

### Four Way Display Panel

Example Part #: **FWDP5424PM.29T**

Four Way Display Panel: **FWDP**

Height: **54"**, 60"

Panel Width: **24"**, 30", 36"

Ext Panel: **P** (Peg)

Int Panel: **M**(Mtk)

Standard Finish: **29T**, Optional Catalog Colors

### Four-Way Pallet Jack Base

Example Part #: **FWDBP47.2FP**

Four Way Display Base Pallet Jack: **FWDBP**

Size (Sq.): 38", **47"**, 56"

Standard Finish: **2FP**, 2HY, Optional Catalog Colors

#### Suffix Key

<b>PLT</b>	- Platinum
<b>LAX</b>	- Platinum Laminate
<b>MA1</b>	- Platinum Melamine
<b>VB2</b>	- Black T-Molding
<b>CHR</b>	- Charcoal Black
<b>2FP</b>	- LAX Top, PLT Top Cover, CHR Base
<b>2HY</b>	- MA1 Top, PLT Top Cover, CHR Base
<b>29T</b>	- PLT Exterior, PLT Interior, PLT Frame

